

ELISA kit for Environmental Allergen

House dust mite allergen Der p 1, Der f 1, Der 2

High-sensitivity
High-reproductivity
ELISA kit for biological
environmental allergen

Ceder pollen allergen Cry j 1, Cry j 2

Cat allergen Fel d 1

Features

【 High-sensitivity 】

Very small volume of allergen can be detected by Streptavidin-Biotin method.

【 High-specificity 】

Only target allergen can be detected from contaminant samples.

【 High-reproductivity 】

Intra-, Inter-, Lot-to Lot reproducibility: C.V. ≤ 5%

【 Easily 】

Kits are equipped with all the necessary components.

【 Separatable 】

Antibody coated plate can be used separately.

Products list

Mite

House dust mite allergen ELISA kit	—	Der p 1 (From stool of <i>Dermatophagoides pteronyssinus</i>)	p.2
	—	Der f 1 (From stool of <i>Dermatophagoides farinae</i>)	p.2
	—	Der 2 (From body of <i>Dermatophagoides pteronyssinus</i> and <i>Dermatophagoides farinae</i>)	p.3

Pollen

Ceder pollen allergen ELISA kit	—	Cry j 1 (From <i>Cryptomeria japonica</i>)	p.4
	—	Cry j 2 (From <i>Cryptomeria japonica</i>)	p.4

Cat

Cat allergen ELISA kit	—	Fel d 1 (From <i>Felis domesticus</i>)	p.5
------------------------	---	---	-----

ニチニチ製薬株式会社

House dust mite allergen (Der 1) ELISA kit

The Nichinichi Der 1 ELISA kit is used for the quantitative measurement of a major allergen of dust mite, Der p 1 and Der f 1.

Der p 1

Der f 1

Dermatophagoides pteronyssinus and *Dermatophagoides farinae* are dominant species in house.

Der 1 is the allergen from mite stool, and it has high allergenicity (2 µg / g) is considered to increase the risk of allergic sensitization. It is important to measure Der 1 quantity to reduce the allergic risk.

Reagents Provided

Name	Package Size
A. Antibody coated plate	8 wells × 12
B. ELISA diluent	50 mL × 1
C. Wash buffer (20x)	50 mL × 1
D. Stop solution	20 mL × 1
E. Substrate reagent A	7 mL × 1
F. Substrate reagent B	7 mL × 1
G. Detection antibody	50 µL × 1
H. Streptavidin-labeled HRP	30 µL × 1
I. Standard (128 ng/mL)	250 µL × 1
J. Internal control (About 10 ng/mL)	500 µL × 1

Stored at 4 °C



Assay Procedure

Antibody coated plate

Add standards, internal control, and samples

Add prepared detection antibody

Incubate 2 hours (37°C) and Wash

Add prepared Streptavidin-labeled HRP

Incubate 1 hour (37°C) and Wash

Add prepared Substrate reagent A and B

Incubate 5 min (37°C)

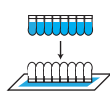
Add Stop solution

Abs at 450nm

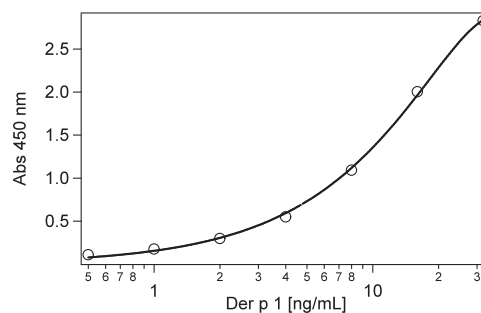
Add to plate



Wash



Standard curve (Der p 1)



Reproducibility

Within assay CV C.V. ≤ 5 %

Between assay CV C.V. ≤ 5 %

※Using Standard

Cross reactivity

No signification cross reactivity between Der p1 and Der f 1.

Product Information

Product No.	Product Name	Allergen	Assay range	Total Assay Time
49500 - 10	House dust mite allergen (Der p1) ELISA kit	Der p 1	0.5 - 32 ng/mL	3 h 5 min
49500 - 11	House dust mite allergen (Der f1) ELISA kit	Der f 1	0.5 - 32 ng/mL	3 h 5 min

New!

ニチニチ製薬株式会社

House dust mite allergen (Der 2) ELISA kit

Der 2

The Nichinichi Der 2 ELISA kit is used for the quantitative measurement of a Der 2.

Dermatophagoides pteronyssinus and *Dermatophagoides farinae* are dominant species in Japanese house.

Der 2 is correlate with mite numbers because Der 2 allergen is from mite body,

The Der 2 kit can measure Der 2 quantity from both *Dermatophagoides pteronyssinus* and *Dermatophagoides farinae*.

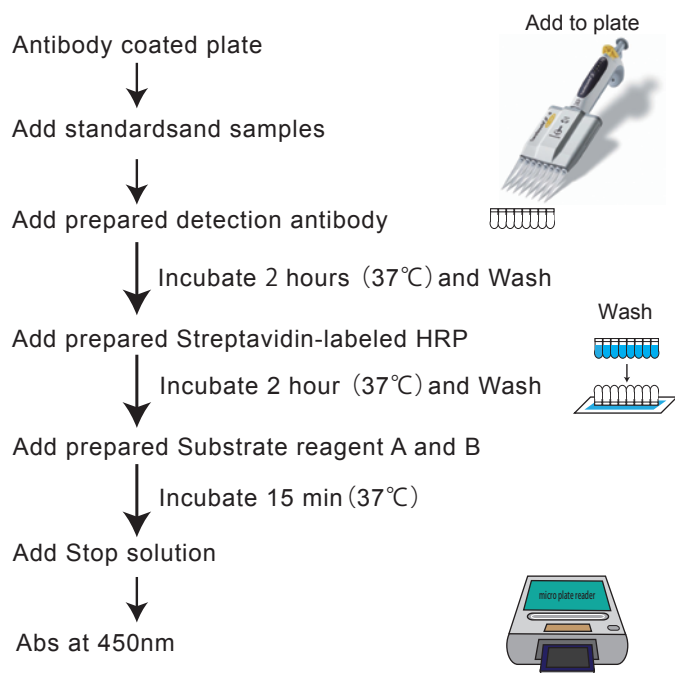
Reagents Provided

Name	Package Size
A. Antibody coated plate	8 wells × 12
B. ELISA diluent	50 mL × 1
C. Wash buffer (20x)	50 mL × 1
D. Stop solution	20 mL × 1
E. Substrate reagent A	7 mL × 1
F. Substrate reagent B	7 mL × 1
G. Detection antibody	100 μL × 1
H. Streptavidin-labeled HRP	30 μL × 1
I. Standard (64 ng/mL)	300 μL × 1

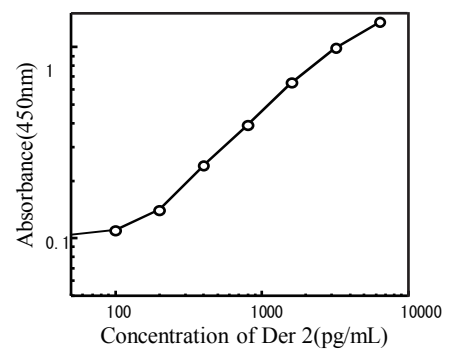
Stored at 4 °C



Assay Procedure



Standard curve (Der 2)



Reproducibility

Within assay CV C.V. ≤ 5 %
 Between assay CV C.V. ≤ 5 %

※Using Standard

Product Information

Product No.	Product Name	Allergen	Assay range	Total Assay Time
49500 - 18	House dust mite allergen (Der 2) ELISA kit	Der 2	100 - 6400 pg/mL	5 h 15 min

 二子二子製薬株式会社

Ceder pollen allergen (Cry j) ELISA kit

The Nichinichi Cry j 1 ELISA kit is used for the quantitative measurement of a major allergen of Japanese cedar pollen, Cry j 1 and Cry j 2.

Cry j 1

Cry j 2

Japanese cedar (*Cryptomeria japonica*) pollinosis is the most prevalent form of pollinosis in Japan. To measure Cry j level is important to self-management and product development against Japanese cedar pollinosis. This Cry j kit has high detection level, about 50 pollens (Cry j 1 : 5.4 pg/mL) are detectable. Both Cry j 1 and Cry j 2 are detectable in each kit.

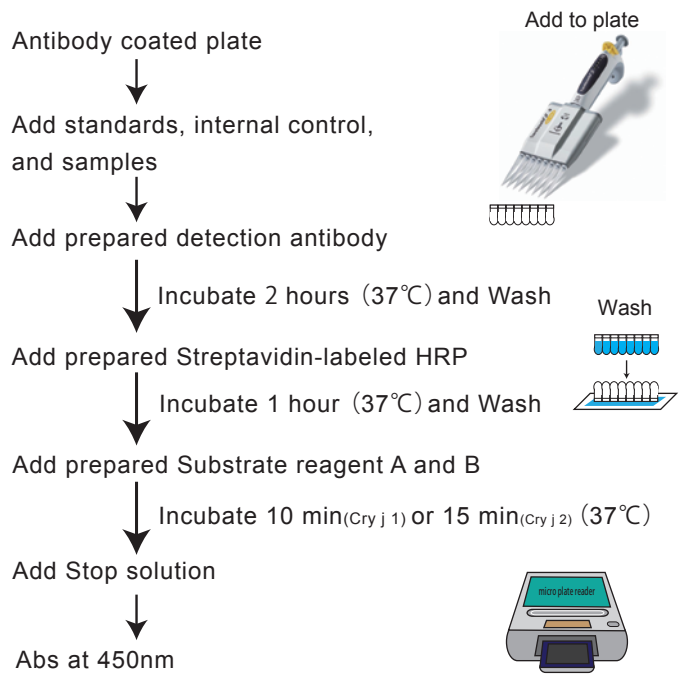
Reagents Provided

Name	Package Size
A. Antibody coated plate	8 wells × 12
B. ELISA diluent	50 mL × 1
C. Wash buffer (20x)	50 mL × 1
D. Stop solution	20 mL × 1
E. Substrate reagent A	7 mL × 1
F. Substrate reagent B	7 mL × 1
G. Detection antibody	50 μL × 1
H. Streptavidin-labeled HRP	30 μL × 1
I. Standard (64 ng/mL)	250 μL × 1
J. Internal control (About 5 ng/mL)	500 μL × 1

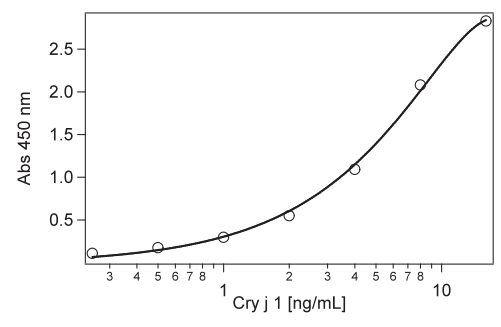


※Internal control is not included in Cry j 2 kit Stored at 4 °C

Assay Procedure



Standard curve (Cry j 1)



Reproducibility

Within assay CV C.V. ≤ 5 %
 Between assay CV C.V. ≤ 5 %
 ※Using Standard

Cross reactivity

No signification cross reactivity between Cry j1 and Cry j 2.

Product Information

Product No.	Product Name	Allergen	Assay range	Total Assay Time
49500 - 12	Ceder pollen allergen (Cry j 1) ELISA kit	Cry j 1	0.25 - 16 ng/mL	3 h 10 min
49500 - 13	Ceder pollen allergen (Cry j 2) ELISA kit	Cry j 2	2.5 - 160 ng/mL	3 h 10 min

Fel d 1

Cat allergen (Fel d1) ELISA Kit

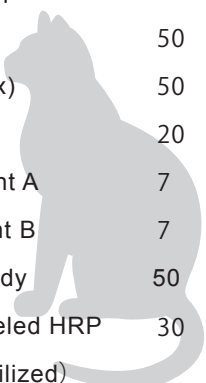
The Nichinichi Fel d 1 ELISA kit is used for the quantitative measurement of a major allergen of cat, Fel d 1.

Allergen of cat (*Felis domesticus*) enters into bronchus and may cause asthma because it is very small particles. It may be detected in Non-breeding place because it drifts in air for a long time and diffuse easily. And it has high allergenicity (1 µg / g is considered to increase the risk of sensitization).

It is important to measure Fel d 1 quantity to reduce the allergic risk. This kit has very high detection level (Fel d 1 : 100 pg/mL) .

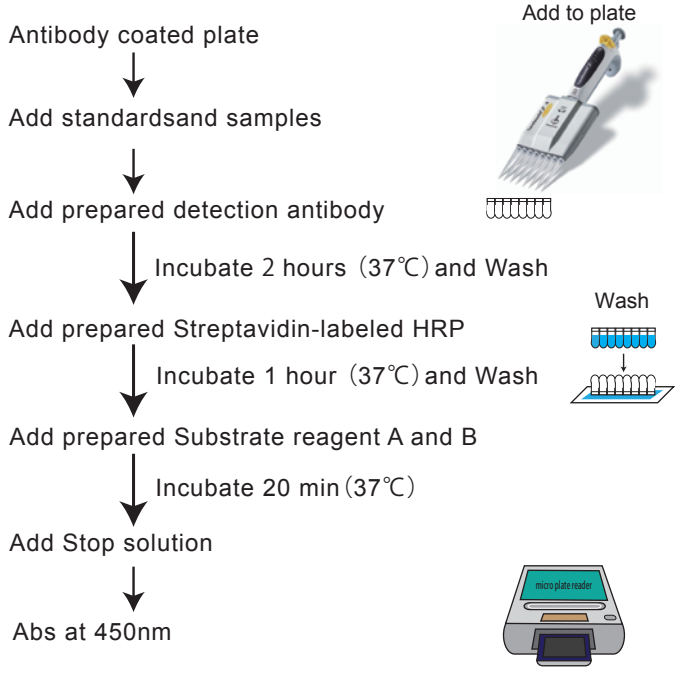
Reagents Provided

Name	Package Size
A. Antibody coated plate	8 wells ×12
B. ELISA diluent	50 mL × 1
C. Wash buffer (20x)	50 mL × 1
D. Stop solution	20 mL × 1
E. Substrate reagent A	7 mL × 1
F. Substrate reagent B	7 mL × 1
G. Detection antibody	50 µL × 1
H. Streptavidin-labeled HRP	30 µL × 1
I. Standard (lyophilized)	× 2

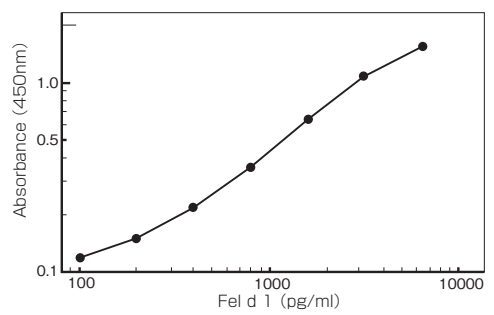


Stored at 4 °C

Assay Procedure



Standard curve (Fel d 1)



Reproducibility

Within assay CV	C.V. ≤ 5 %
Between assay CV	C.V. ≤ 5 %

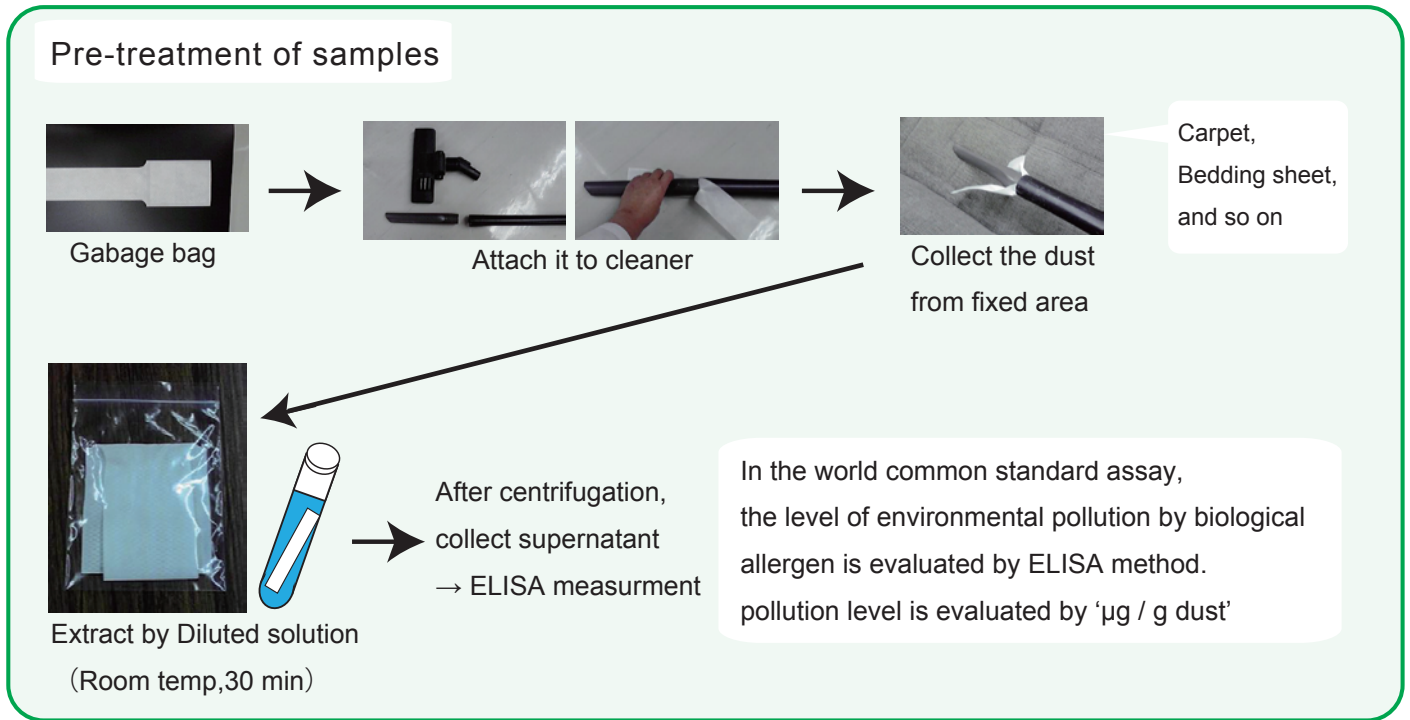
※Using Standard

Product Information

Product No.	Product Name	Allergen	Assay range	Total Assay Time
49500 - 14	Cat allergen (Fel d1) ELISA Kit	Fel d 1	100 - 6400 pg/mL	3 h 20 min



● Garbage bag for allergen – for collecting dust



Product No.	Product Name	Size
49500 - 15	Garbage bag for house dust allergen (SES)	50 bags

● Diluted solution – for extracting samples

Product No.	Product Name	Adapted kit	Size
49500 - 16	Diluted solution for house dust mite allergen	Der p 1, Der f 1, Der2	100 mL
49500 - 17	Diluted solution for cedar pollen allergen	Cry j 1, Cry j 2, Fel d 1	100 mL



Mite Allergen



Product No.	Product Name	Allergen	Assay range	Total Assay Time
49500 - 10	House dust mite allergen (Der p1) ELISA kit	Der p 1	0.5 - 32 ng/mL	3 h 5 min
49500 - 11	House dust mite allergen (Der f1) ELISA kit	Der f 1	0.5 - 32 ng/mL	3 h 5 min

Product No.	Product Name	Allergen	Assay range	Total Assay Time
49500 - 18	House dust mite allergen (Der 2) ELISA kit	Der 2	100 - 6400 pg/mL	5 h 15 min

Pollen Allergen



Product No.	Product Name	Allergen	Assay range	Total Assay Time
49500 - 12	Ceder pollen allergen (Cry j 1) ELISA kit	Cry j 1	0.25 - 16 ng/mL	3 h 10 min
49500 - 13	Ceder pollen allergen (Cry j 2) ELISA kit	Cry j 2	2.5 - 160 ng/mL	3 h 10 min

Cat Allergen



Product No.	Product Name	Allergen	Assay range	Total Assay Time
49500 - 14	Cat allergen (Fel d1) ELISA Kit	Fel d 1	100 - 6400 pg/mL	3 h 20 min



KANTO CHEMICAL CO., INC.
REAGENT DIVISION

East Muromachi Mitsui BLDG, 2-1, Nihonbashi Muromachi 2-chome,
 Chuo-ku, Tokyo, 103-0022, JAPAN

Telephone +81-3-6214-1092

Telefax +81-3-3241-1053

<http://www.kanto.co.jp>

E-mail: kanto-61@gms.kanto.co.jp